



University  
of Glasgow

# Mature student Access at the University of Glasgow

Alec MacKinnon (Short Courses)

- Extra-mural Department from 1952 (“DACE” from 1985)
- **Access** programme from 1979, “...based on the conviction that there are many adults potentially able to benefit from higher education who have not had the opportunity”
- Aims to provide a preparation for degree study, paying attention to the needs and circumstances of adults returning to education



# 59 Oakfield Avenue Home of DACE, 1961-2001



# Access students prepare for study by studying two subjects in depth

Three programmes:

- Arts and Social Sciences
- Law, Business and Accountancy
- Science, Engineering and Nursing

Accepted for most degrees in University of Glasgow, except Medicine/Dentistry/Vet

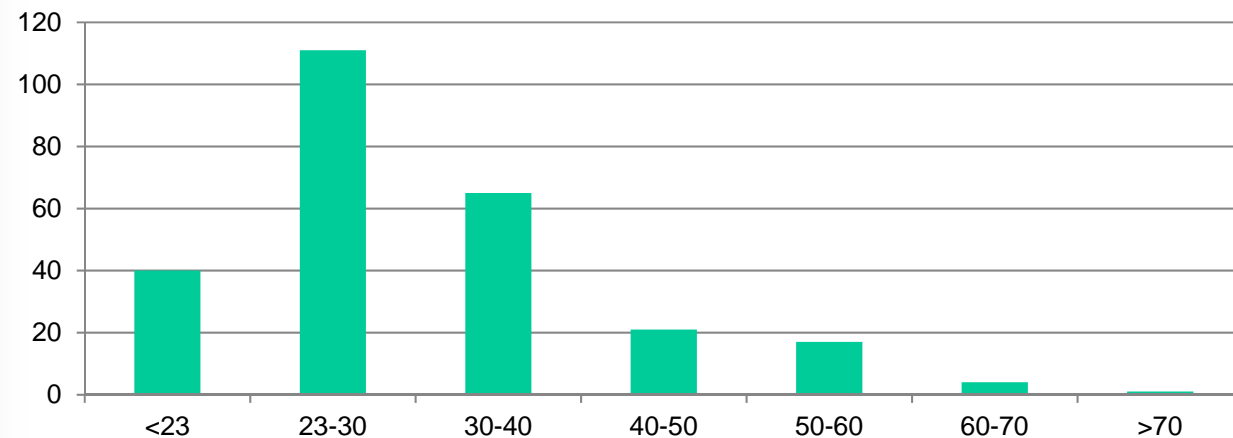
Assessment: combination of coursework/final exam, mirroring Level 1 assessment practices

	MONDAY	TUESDAY	WEDNESDAY	THURSDAY	FRIDAY
Arts & Social Sciences <small>Law, Business &amp; Accountancy</small>		Psychology (d): 10am -12 noon		English Literature (d): 10am -12 noon	
		Sociology (d): 1-3pm	Scottish History: 1-3pm  Law: 4-6pm	Medieval History: 1-3pm	
	Philosophy: 6-8pm  Psychology (e): 7-9pm	History of Art: 6.30-8.30pm  English Literature (e): 6.30-8.30pm  Economics: 7-9pm	Social & Economic History: 6.30-8.30pm  Classical Studies (Greece & Rome): 7-9 pm	Politics: 6-8pm  Sociology (e): 6.30-8.30pm  Theology & Religious Studies: 7-9pm	
Sciences	Chemistry: 6.30-9.30pm	Physics: 6.30-9.30pm	Biology: 6.30-9.30pm	Mathematics: 6.30-9.30pm	

# Access continues to grow!

Academic year	Number starting Access	Number completing (i.e. gaining grades >D for both subjects)	Number progressing via UCAS (% of initial enrolments)
2016-17	248	141	124 (50%)
2015-16	191	106	84 (44%)
2014-15	183	112	92 (50%)

**Distribution over age, 2017-18 (N=270)**

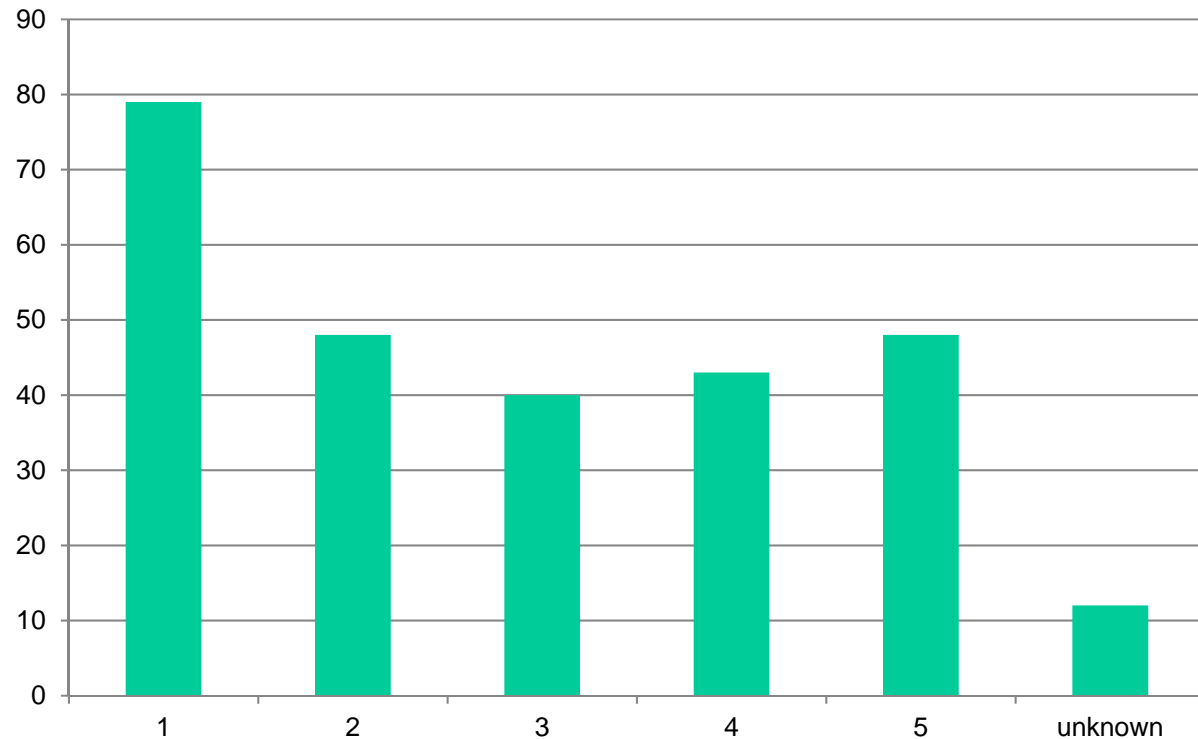


“SIMD” = Scottish Index of Multiple Deprivation

Ranks all **postcodes** in Scotland by several measures of deprivation

Used extensively in Scottish WP policy

**Distribution over SIMD quintile, 2017-18**  
1 = most deprived; N= 270



- Enables an increasing number of adults to make their way into higher education and thus to contribute to civic society and the economy
- Benefits “mature students” broadly, but also contributes to a Widening Participation agenda expressed through SIMD postcode analysis
- Issues:
  - recruitment from under-privileged areas
  - lack of recognition of adult learners at policy level
  - ..... (ask me over a beer!)